

# pure



The  
*Milford*  
Collection

by Coppercraft®





# Magnetic Hematite Bracelets



MH3152 (MHB01)



MH3173 (MHB02)



MH3405 (MHB03)



MH3453 (MHB04)



MH3456 (MHB05)



MH3457 (MHB06)



MH3458 (MHB07)



MH3459 (MHB08)



MH3464 (MHB09)



MH3471 (MHB10)



MH3490 (MHB11)



MH3492 (MHB12)



MH3493 (MHB13)



MH3502 (MHB14)



MH3503 (MHB15)



MH3508 (MHB16)



MH3510 (MHB17)



MH3513 (MHB18)





MH3514 (MHB19)



MH3516 (MHB20)



MH3517 (MHB21)



MH3518 (MHB22)



MH3520 (MHB23)



MH3521 (MHB24)



MH3522 (MHB25)



MH3527 (MHB26)



MH3529 (MHB27)



MH3530 (MHB28)



MH3534 (MHB29)



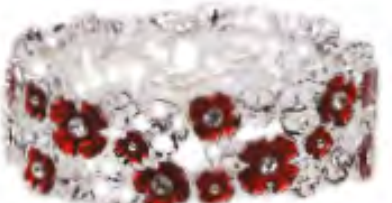
MH3538 (MHB30)



MH3540 (MHB31)



MH3543 (MHB32)



MH3546 (MHB33)



MH3547 (MHB34)



MH3548 (MHB35)



MH3552 (MHB36)



MH3553 (MHB37)



MH3554 (MHB38)



MH3555 (MHB39)





MH3556 (MHB40)



MH3557 (MHB41)



MH3558 (MHB42)



MHB43



MHB44



MHB45



MHB46



MHB47



MHB48



MHB49



MHB50



MHB51



MHB52



MHB53



MHB54



MHB55



MHB56



MHB57





# Copper Magnetic Bracelets

3 Packaging Options - - Gift Box / Card / Clam Pack



BA116M (CMB01)



BA131LM (CMB02)



BA134LM (CMB03)



BA145M (CMB04)



BA146LM (CMB05)



BA148M (CMB06)



BA166M (CMB07)



BA175LM (CMB08)



BA176LM (CMB09)



BA179M (CMB10)



BA185M (CMB11)



BA186LM (CMB12)



BA189M (CMB13)



BA190M (CMB14)



BA191M (CMB15)



BA193LM (CMB16)



BA194M (CMB17)



BA195LM (CMB18)



BA196LM (CMB19)



BA197M (CMB20)



BA198M (CMB21)



BA199M (CMB22)



BA31LM (CMB23)



BA4M (CMB24)





BA53M (CMB25)



BA55M (CMB26)



BD18LM (CMB27)



BD22LM (CMB28)



CMB29



CMB30



CMB31



CMB32

## Copper Magnetic Rings



CMR01



CMR02



CMR03



CMR04



CMR05



CMR06



## Leather Magnetic Bracelets



Grey/Black - Adjustable Size  
LB02M (LMB01)



Black - Adjustable Size  
LB03M (LMB02)



Brown/Black - Adjustable Size  
LB04M (LMB03)



Black - Adjustable Size  
LB19M (LMB04)



Black - Adjustable Size  
LB21M (LMB05)



Black - Adjustable Size  
LB22M (LMB06)



Brown - Adjustable Size  
LB23M (LMB07)





# Stainless Steel Magnetic Bracelets



BR14LM (MSB01)



BR16LM (MSB02)



BR56LM (MSB03)



BR62LM (MSB04)



BR63LM (MSB05)



BR64LM (MSB06)



BR65LM (MSB07)



BR66LM (MSB08)



BR67LM (MSB09)



BR68LM (MSB10)



BR69LM (MSB11)



BR70LM (MSB12)



BR71LM (MSB13)



BR72LM (MSB14)



BR73LM (MSB15)



# Necklaces & Earrings made from Real Leaves



L002 (LP01) | LE002 (LE01) Silver    L004 (LP02) | LE004 (LE02) Champagne    L005 (LP03) | LE005 (LE03) Iridescent    L006 (LP04) | LE006 (LE04) Pink



L007 (LP05) | LE007 (LE05) Green    L012 (LP06) | LE012 (LE06) Galaxy    L018 (LP07) | LE12 Pink Pastels    L019 (LP08) | LE13 Blue Pastels



L026 (LP09) | LE026 (LE07) Lilac    LP14 | LE14 Primrose Gold    L015 (LP10) | LE015 (LE08) Monarch Butterfly



L020 (LP11) | LE020 (LE09) Green Butterfly    L024 (LP12) | LE024 (LE10) Turquoise Butterfly    L027 (LP13) | LE027 (LE11) Pink Butterfly





# Birthstone Heart Jewellery



January Garnet  
S201 (BHP01) | S301 (BHE01)



February Amethyst  
S202 (BHP02) | S302 (BHE02)



March Aquamarine  
S203 (BHP03) | S303 (BHE03)



April Diamond  
S204 (BHP04) | S304 (BHE04)



May Emerald  
S205 (BHP05) | S305 (BHE05)



June Alexandrite  
S206 (BHP06) | S306 (BHE06)



July Ruby  
S207 (BHP07) | S307 (BHE07)



August Peridot  
S208 (BHP08) | S308 (BHE08)



September Sapphire  
S209 (BHP09) | S309 (BHE09)



October Light Rose  
S210 (BHP10) | S310 (BHE10)



November Topaz  
S211 (BHP11) | S311 (BHE11)



December Turquoise  
S212 (BHP12) | S312 (BHE12)



# Tree of Life Birthstone Necklaces Solitaire Birthstone Earrings

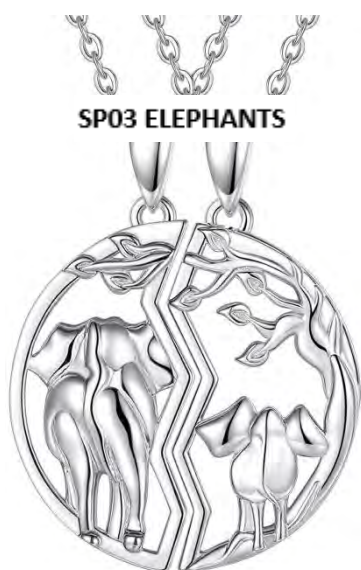


# Friendship Pendant Split Necklaces

## Sets of 2 friendship pendant split necklaces

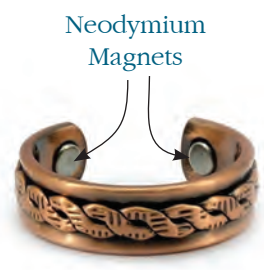
The necklace comes ready split, one half to keep, and the other to be gifted to your special friend, sister, mum, daughter, wife, girlfriend, cousin the options are endless. Packaged in an attractive pure by coppercraft branded gift box.

Give one half to a loved one and keep the other half so you are always connected!





Neodymium Magnets



Neodymium Magnets

Copper



Neodymium Magnets



Far Infra-Red

Neodymium

Hematite

99.9% Germanium



Magnetic Hematite

**pure**  
by Coppercraft®  
@ Milford Collection

**HOW IT WORKS**  
It is thought that the gentle magnetic flux polarises the blood as it flows past, enabling oxygen to be carried around the body and toxins removed more freely.

The magnets we use are :-

**MAGNETIC HEMATITE**  
A naturally occurring substance that can be ground and reformed into magnetic beads giving a gentle flux of 500-1,000 gauss

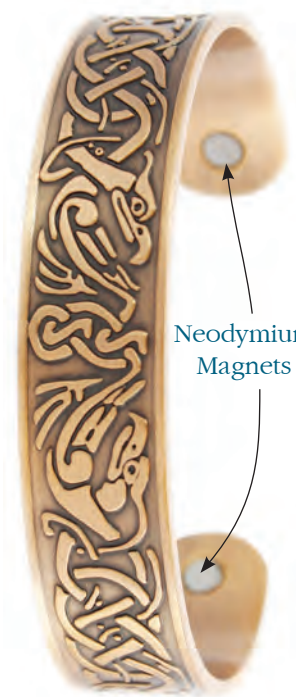
**NEODYMIUM MAGNETS**  
A more powerful flux of between 1,500-2,000 gauss

**FAR INFRA-RED**  
An invisible part of the electromagnetic spectrum, penetrates more deeply

**GE32-GERMANIUM**  
Negative ion Germanium to counteract the positive ions found in and around office equipment and computers.

**COPPER**  
Not magnetic but therapeutic. The skin is thought to absorb tiny particles of copper forming salts which replace deficiencies in affected joints.

Magnets should not be worn by people with pacemakers or whilst pregnant.



Neodymium Magnets



Neodymium Magnets

## The Milford Collection

Unit G Vastre Industrial Estate • Newtown • Powys • SY16 1DZ •  
United Kingdom T: 01686 629919 • E: john@milfordcollection.com

[www.milfordcollection.com](http://www.milfordcollection.com)

